

外径測定ヘッド

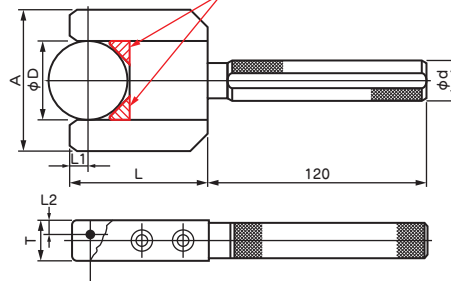
Measuring head for external diam.

被測定物をはさむだけで高精度の外径測定ができる、はさみ式と測定物を挿入するリング式の2種類が標準化されています。

Two kinds of caliper type and ring type are standardized. It is easy to do precision measurement only to put a workpiece between measuring head (caliper type) or to insert a workpiece into measuring head (ring type).

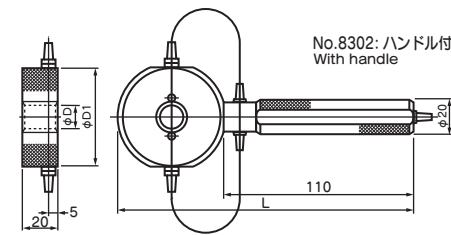
はさみ式 No.8310 Caliper type

※測定物を受けるV面の材質は超硬、または焼き入れをしたSKS材の2種類からお選びください
※Please select the material of the V-groove that supports the workpiece from either cemented carbide or hardened SKS steel.

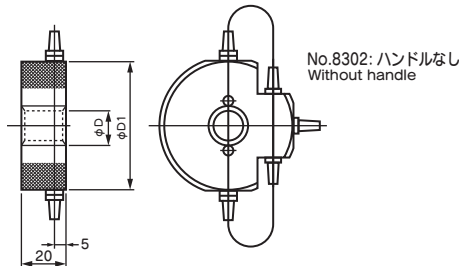


φD	A	L	L1	L2	T	φD
5-10	42	45	6			
10-12		54				
12-15	D+30	60	8	5	20	23
15-25		65				
25-35		69				
35-50		72			22	
50-65		82				
65-85		92			25	
85-105		102				

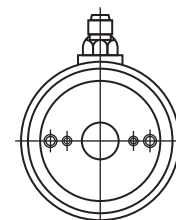
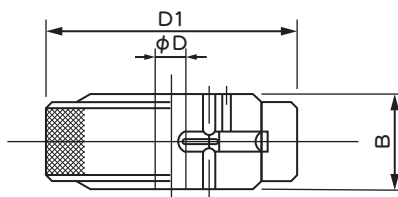
リング式 No.8300・8302 Ring type



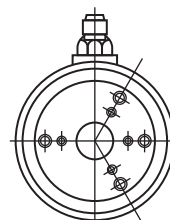
φD	D1	L
6-10	50	159
10-20	60	169
20-30	70	179
30-40	80	189
40-50	90	199
50-60	106	215



リング式 No.6300・6303 Ring type



No.6300: 対向ノズル
Two measuring nozzles



No.6303: 3方向ノズル
Three measuring nozzles

φD	D1	B
8-14	55	18
14-20	62	
20-26	68	22
26-32	74	
32-38	80	24
38-45	88	26
45-52	94	28
52-60	102	30
60-68	110	32
68-76	118	34
76-84	125	36
84-92	134	38
92-100	142	40
100-108	150	42
108-116	158	44

- φ8以下のサイズにつきましては、ご相談ください。
- ハードクロムメッキ、TiNコーティング製品も製作いたします。

- Please ask for φ8 and smaller.
- Measuring heads with hard chrome plating or TiN coating can also be manufactured, and the base material of the measuring head can be specified.

(注) No.6300は対向ノズル、No.6303は3方向ノズル
Note
No.6300: Two measuring nozzles
No.6303: Three measuring nozzles